

LITHOCHROME® Color Hardener, LITHOCHROME® Antiquing Release & SCOFIELD® Texturetop®

PRODUCT DESCRIPTIONS:

LITHOCHROME Color Hardener is a dry-shake colored hardener formulated to be easily incorporated into the surface of freshly placed concrete.

LITHOCHROME Antiquing Release is a powdered, colored bond breaker used when imprinting with mat-type texturing or stamping tools.

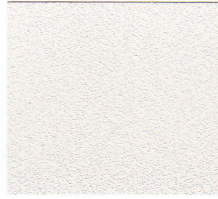
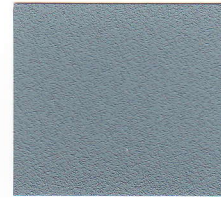
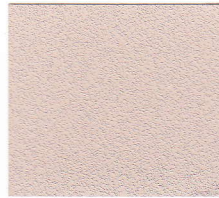
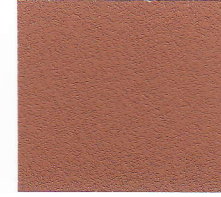
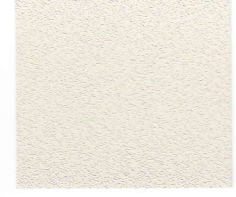
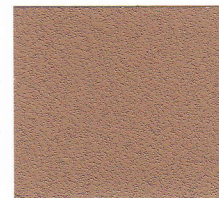
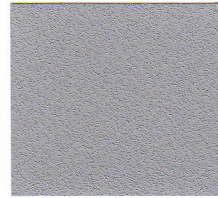
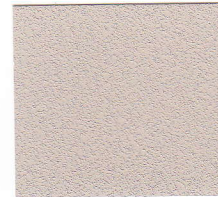
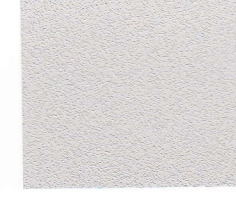
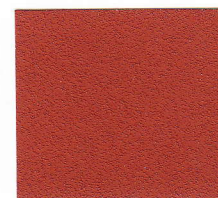
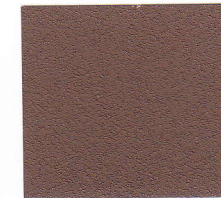
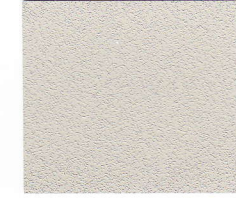
SCOFIELD Texturetop is a trowelable cementitious topping for resurfacing and texturing nonmoving, interior or exterior concrete floors or hardscapes.

LITHOCHROME® Colorwax™ & COLORCURE® Concrete Sealer are available in matching colors.

Additional colors available:
A-11 Concrete Gray, 6016 White, 0510 Black.

Some colors are made to order. Check price list for availability, pricing and possible minimum quantities.

Review Tech-Data Bulletins and MSDS before use. Visit www.scofield.com for the most current versions.

A-53 *Arizona Tan*0266 *Ash White**1138-S *Blue Smoke+\$\$*A-59 *Beige Cream**0568 *Blush Beige**A-26 *Brick Red*1139 *Burberry Beige**A-33 *Classic Gray*A-27 *Dark Red*A-21 *Deep Charcoal*A-25 *La Crescenta Brown*3611 *Oyster White**A-55 *Pecan Tan*A-57 *Platinum Gray*A-24 *Russet*A-85 *Muted Green*A-50 *Slate Gray*4948 *Smoke Beige**A-51 *Steadman Buff*5183 *Stone Gray**A-29 *Terra Cotta*A-28 *Tile Red*5921 *Walnut*5758 *Weathered Sage**

COVERAGE RATE FOR COLOR HARDENER: Coverage rates vary with intended use and application. LITHOCHROME Color Hardener should be applied at a rate of 50 lb (1 bag) per 100 ft² (2.5 kg/m²), except where indicated by an asterisk(*).

*Denotes colors requiring a higher coverage rate, where Scofield recommends 90-120 lb per 100 ft² (4.5-6.0 kg/m²). See reverse for more information.

+\$\$ = Check current market price.

Colors are approximate and best viewed in daylight. Colors shown represent the use of LITHOCHROME Color Hardener with a flat-troweled finish which has been cured with color-matched LITHOCHROME Colorwax or COLORCURE Concrete Sealer.